

Accessibility Guide

Ocean Beach Tourist Park



At Gold Coast Tourist Parks we are committed to creating extraordinary holiday experiences for everyone. We aim to welcome guests with the highest level of customer service and hospitality, regardless of their individual needs.

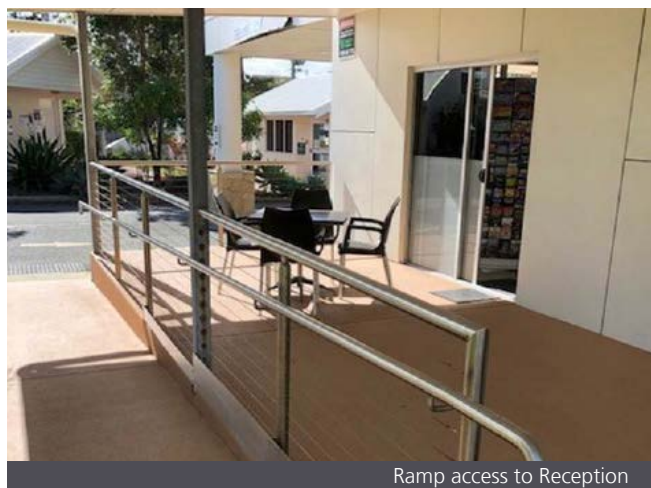
We are committed to ensuring everyone is able to enjoy their holiday and have the best knowledge to make an informed decision on their stay. In the spirit of inclusion and equal access, we are providing the following information that accurately describes the accessibility of the facilities provided at our Tourist Parks.

Reception

The reception area is easily accessible by all guests. A ramp (1300mm wide) equipped with a handrail leads from the driveway up to automatic opening doors (900mm wide). Alternatively there is a RHS handrail for the 3 steps that also lead up to the reception entrance. The office is air conditioned and stocks most of your holiday necessities. Alfresco seating provides a great place to linger!

All staff are trained in First Aid.

Although the park is not pet friendly, service dogs are permitted with full documentation.



Ramp access to Reception

Camp kitchen and laundry facilities

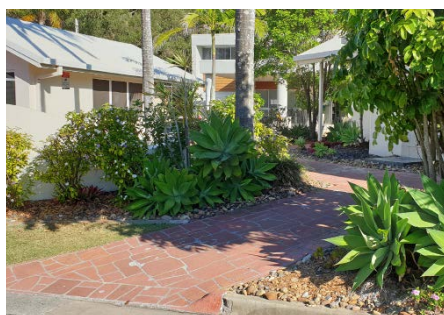
The camp kitchen is the perfect meeting place within the park. This sheltered facility is accessible via the internal park roadway. Fully equipped features include electric barbeques, hot plates, hot water, sink, microwave, electric jug and toaster. The bench height is 900mm with barbeque height 970mm. Two large picnic tables (height 750mm) with bench seating are available. The table under cover has a 1m seat recess for wheelchair access. This spot is ideally positioned for sharing a meal with family and friends, whilst soaking up the amazing park atmosphere. It's location is convenient to amenities and the Reception kiosk.

There is ramp access to the park's spacious laundry facility. The entry doorway clear opening width is 800mm. The entry door is manual opening with a handle. Height of the centre bench, sinks and ironing boards is 900mm. Bench space between the washing machines measures 1000mm high.



Getting around the Park

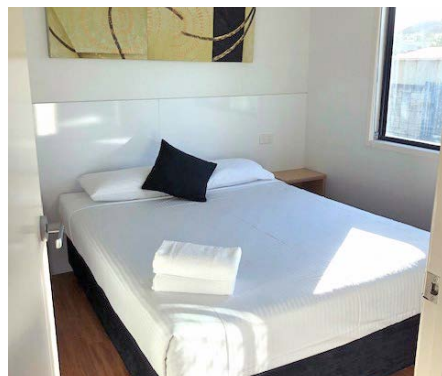
Mobility is made easy throughout the park grounds via the internal network of roads and pathways. These are suitable for users of wheelchairs, prams and mobility scooters.



Accommodation - Easy Access Cabin

Please note that this four-berth cabin does not meet current fully accessible standards, but it does have ease of access features. These include a ramp leading to the front door for easy wheelchair access, and an equipped bathroom (further details beneath). The cabin car parking space is 3300mm wide. Ramp access is 1140mm wide and leads to two front entry glass sliding doors, each with a clear opening width of 780mm and 10mm threshold lip. Out on the balcony, the barbeque height is 890mm and sink height 840mm.

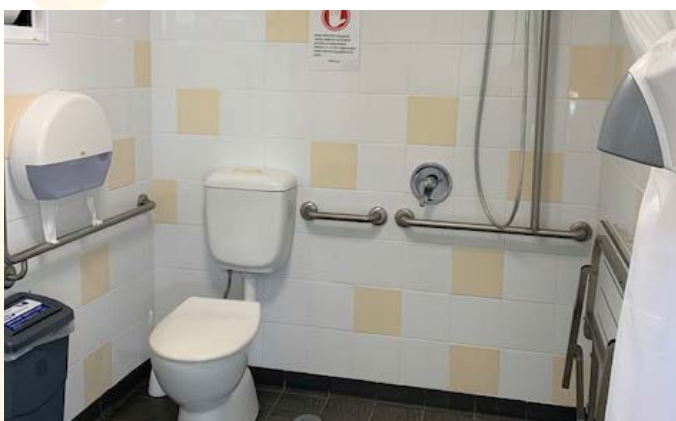
Beach facing and boasting sea views, the easy access cabin features an open plan living area and kitchen with vinyl laminate flooring and tiled in bathroom. The kitchen bench height is 900mm and the bed height is 600mm. The master bedroom doorway has a clear opening width of 780mm and the bathroom 880mm. Hand rails are conveniently placed to bathroom basin, shower and toilet use. The toilet is 490mm high. The shower space measures 1160 x 1120 mm. An extendable shower head, lever operated taps and a fold down bench seat are provided.



Accessible Bathroom Facility

An accessible bathroom facility is situated on the reception side of the park's main amenity block. The doorway clear opening width is 880mm and the floor space is 2m x 1.9m. Features include a tiled floor, hand rails, hand held flexible shower head and a fold down bench seat.

Basin height is 790mm. Access is with a pin code from reception.



Beach access and other information

Beach access is via the keypad gate at the back of the park (eastern side). Within the park an accessible pathway (1170mm wide) leads to the gate which has a clear opening width of 970mm. Beyond this, the pedestrian crossing leads to the patrolled beach. The Miami beachfront footpath stretches 1km and is mainly level. Pop in for a refreshment at the café beside the Surf Lifesaving Club and soak up the inspiring views!

