

Accessibility Guide

Tallebudgera Creek Tourist Park



At Gold Coast Tourist Parks we are committed to creating extraordinary holiday experiences for everyone. We aim to welcome guests with the highest level of customer service and hospitality, regardless of their individual needs.

We are committed to ensuring everyone is able to enjoy their holiday and have the best knowledge to make an informed decision on their stay. In the spirit of inclusion and equal access, we are providing the following information that accurately describes the accessibility of the facilities provided at our Tourist Parks.

Reception and Kiosk

The spacious, air conditioned reception area is accessed through a 1m wide automatic sliding door. Ample floor area within the office provides turning space for prams and wheelchairs. An alternate entry door (with handle) has a clear opening width of 770mm. The separate kiosk building and leisure area features ample sized access doors and outdoor space.

Please note there is no ramp to the footpath at the front entry. An access point leading from the check-in vehicle bay is available subject to the bay being vacant.

A staff member trained in First Aid is always available. Although the park is not pet friendly, service dogs are permitted with full documentation.



Camp kitchen and laundry facilities

Wide open pathways and a spacious camp kitchen layout make this facility accessible for guests using wheelchairs, walkers and prams. The camp kitchen is equipped with a toaster, microwave, fridge/freezer, bench height of 975mm, barbeque height of 940mm and picnic table height of 850mm with bench seats height of 500mm. An additional sheltered barbeque area located in the northern section of the Park features a fridge and picnic bench seating. Maneuverability is limited due to this area's smaller space.

Two large laundry blocks available within the Park are both equipped with washers, dryers, wash basins, irons and ironing boards. The entry door clear opening width is 805mm (Third Ave) and 850mm (Sixth Ave). Both have a 5mm threshold lip. Bench height is 870mm (Third Ave) and 850mm (Sixth Ave); ironing board height is 800mm (Third Ave) and 850mm (Sixth Ave). The laundry off Sixth Ave features large double doors (1800mm width, 5mm threshold lip) accessing the outdoor clothes drying area.



Swimming Pools

Of the Park's two swimming pools, the larger resort pool features a fun-filled water play area for toddlers to splash around in. The descending incline into the main pool is designed to facilitate easy access for all guests. Maximum depth is 1.6m.

Use of the smaller pool behind Reception is reserved for guests over 18 years of age. This smaller pool has stair access into the water with a hand rail for support. Pool depth is 900mm.

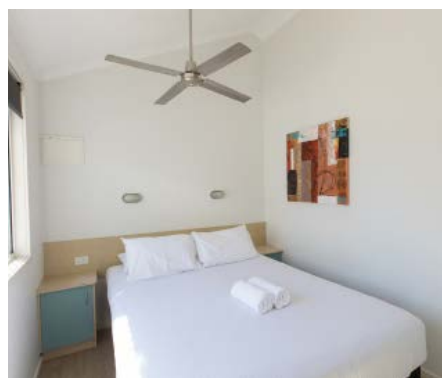
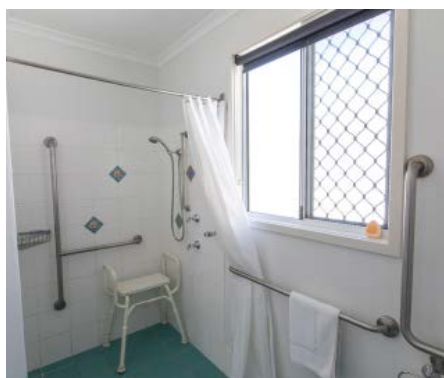
Both swimming pools are heated seasonally and access is via wide open pathways. Gates for the resort pool have a clear opening width of 1.2m and gates for the Over 18's pool 1m.



Accommodation - Easy Access Cabin

Please note that this four-berth cabin does not meet current fully accessible standards, but it does have ease of access features. These include a ramp leading to the front door for easy wheelchair access, and an equipped bathroom (further details beneath). The cabin car parking space has a length of 5900mm and width of 3600mm (tapering to 1880mm). Ramp access is 1050mm wide and leads to the front entry glass sliding door with a clear opening width of 795mm. Out on the balcony, the barbeque height is 960mm and sink height 910mm.

Boasting calm waterfront views, the easy access cabin features an open plan living area and kitchen with tiled flooring and laminate in bedroom. The kitchen bench height is 900mm and the bed height is 650mm. The master bedroom doorway has a clear opening width of 670mm and the bathroom 800mm. Hand rails are conveniently placed to bathroom basin, shower and toilet use. The toilet height is 440mm. An extendable shower head and a portable shower stool with handles are provided.



Accessible Bathroom Facilities

One accessible bathroom is located on the southern side of the Sixth Ave block and the other at the Third Ave block. Doorway clear opening widths are 850mm and 805mm. The floor spaces measure 2.1m x 2.3m and 2.1m x 3.5m. Features include non slip vinyl flooring, hand rails, hand held flexible shower rose and a fold down bench seat. Basin height is 810mm and 740mm. Access is with a pin code or key (deposit required) from reception.



Beach access and other information

Beach access is via the footpath surrounding the waterfront boundary of the park overlooking Tallebudgera Creek. This level public footpath leads under the motorway to Neptune Beach. Two beach wheelchairs (WaterWheels) are available here and beach matting is rolled out every Saturday during patrol season. Refreshments are available from a café and kiosk. There are many views to soak up along this beautiful creek pathway!

